

# USE CASE

# MACHINE MONITORING & ALERTS

## Safe Manufacturing

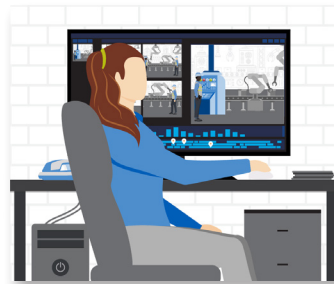
### Operational View



#### DETECT

##### MACHINE ALERT ACTIVATED

Machine failure alert on production line automatically triggers an alert to the line supervisor.



#### ANALYZE

##### PRODUCTION MONITORED

Operational staff use cameras to monitor the situation and evaluate how the issue is affecting overall production.



#### COMMUNICATE

##### NOTIFICATION COMMUNICATED

After initial alert, the line supervisor creates work order ticket for maintenance and communicates directly with the plant manager. An All Call notification is sent to other departments notifying them of a production delay.



#### RESPOND

##### ISSUE RESOLVED MINIMAL DOWNTIME

Maintenance replaces a part during the next shift change to prevent breakage. Work order ticket closed.

### Technology View



#### DETECT

- Machine Failure Alert Integration
- Radio Communications



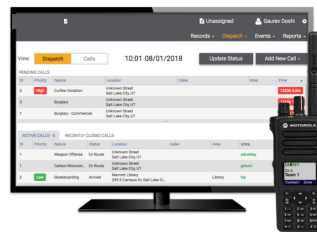
#### ANALYZE

- Avigilon Video Security Cameras
- Avigilon Control Center
- CommandCentral Aware Enterprise



#### COMMUNICATE

- Radio Communications: Voice & Multimedia
- WAVE PTX: Broadband Push-to-Talk with Multimedia Sharing
- Dispatch Software
- Work Order Ticket Management



#### RESPOND

- Work Order Ticket Management



\*Camera footage is for illustrative purposes only

Motorola Solutions, Inc. 500 West Monroe Street, Chicago, IL 60661 U.S.A. [motorolasolutions.com](http://motorolasolutions.com)

MOTOROLA, MOTO, MOTOROLA SOLUTIONS and the Stylized M Logo are trademarks or registered trademarks of Motorola Trademark Holdings, LLC and are used under license. All other trademarks are the property of their respective owners. © 2021 Motorola Solutions, Inc. All rights reserved. 01-2021